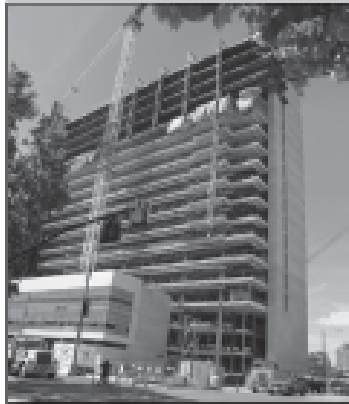


COLORFAST CONCRETE

Designed for your architectural concrete application

Using proven technology, Central Concrete can create numerous colors for your architectural concrete needs in just a matter of minutes. You can custom-design many shades or textures of colored concrete. Central Concrete's liquid color system provides Colorfast™ winning solutions for all of your concrete construction needs.



Colorfast ready mixed concrete at its best:

- Specific Colorfast™ concrete mix designs that are color consistent load to load.
- High quality Colorfast™ mixes which have lower shrinkage potential and superior durability.
- Millions of Stealth® synthetic fibers are incorporated into every yard of Colorfast™ to control plastic shrinkage cracking.
- Improved workability and reduced water demand makes Colorfast™ easy to pump, place and finish.
- You can choose from many standard and custom colors.
- Use Chromix L state-of-the-art liquid color dispensing system.
- Requires LITHOCHROME Colorwax™ curing system for maximum color potential and durability.



Central Concrete's Colorfast™ is a durable, integrally colored ready mixed concrete product that is designed for any indoor or outdoor application.